

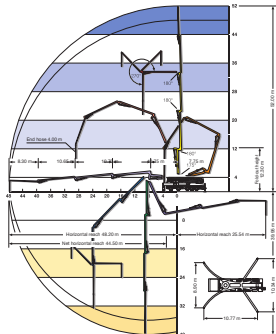
TECHNICAL DATA

Pump battery		P 2525
Max. theor. output	m ³ /h	164
Max. number of strokes	min.	22
Max. concrete pressure	bar	85

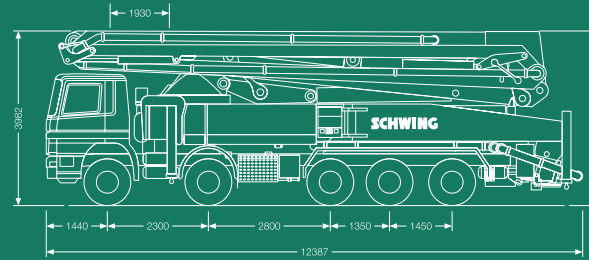
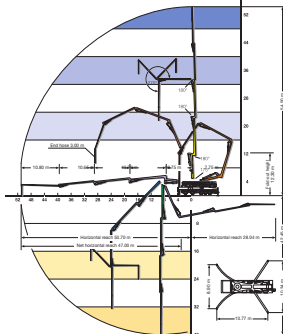
Placing boom		52 RZ	55 RZ
Delivery line diameter		DN 125	DN 112
Length of end hose	m	4,0	3,0
Vertical reach	m	52	54,5
Horizontal reach	m	48,2	50,7
Number of articulations		5	5
Height of articulations	m	3,85 / 11,6 / 22,4 / 33,1 / 43,7	
Slewing range		380°	380°
Outrigger load, front	kN	340	340
Outrigger load, rear	kN	300	300

WORKING RANGE

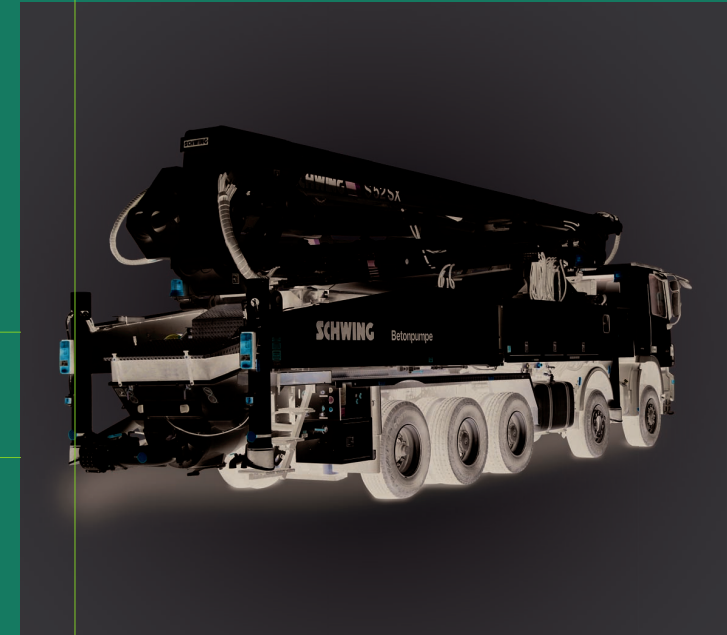
S 52 SX



S 55 SX



TRUCK-MOUNTED CONCRETE PUMPS S 52 SX / S 55 SX



SCHWING-STETTER MOVES CONCRETE. **WORLDWIDE.**

Wherever concrete is produced and moved is where you will find Schwing-Stetter machinery.

With plants in Germany, Austria, USA, Brazil, Russia, China and India as well as with more than 100 sales and service facilities, the group of companies is always close to the customer.

Our wide range of products with something for every application is what makes Schwing-Stetter the No. 1 system supplier for concrete machinery worldwide.



SCHWING GMBH
P.O. Box 20 03 62, D-44647 Herne / Germany
Phone (0) 23 25 / 9 87-0, Fax (0) 23 25 / 7 29 22
www.schwing.de, info@schwing.de

Subject to modifications in the
interest of technical progress.
The exact standard scope of
delivery is detailed in the offer.

10311 0712 2000 04 03K

