

TECHNICAL DATA

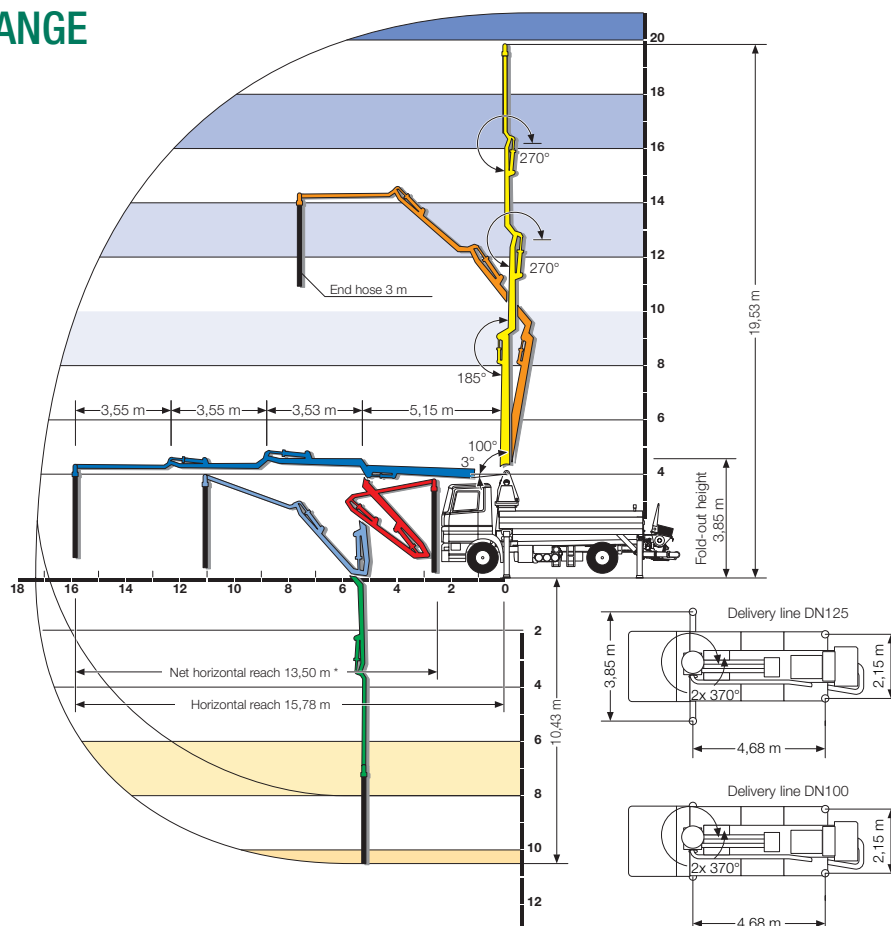
Pump battery		P 2020	P 2023	
Hydraulic drive	l/min	320		380
Performance	<i>K = piston sided , S = rod sided</i>	K	S	
Max. theor. output	m ³ /h	51	90	96
Max. number of strokes	min.	14	24	19
Max. concrete pressure	bar	126	70	85

Performance data is max. theoretical (Max. output and max. pressure cannot be achieved simultaneously.)

Placing boom		20 ZR
Delivery line diameter		DN 100 / DN 125
Length of end hose	m	3,0
Vertical reach	m	19,5
Horizontal reach	m	15,8
Number of articulations		4
Height of articulations	m	3,75 / 8,9 / 12,4 / 16,0
Slewing range		2 x 370°
Outrigger load, front	kN	110
Outrigger load, rear	kN	70

WORKING RANGE

S 20



* Built on MB chassis