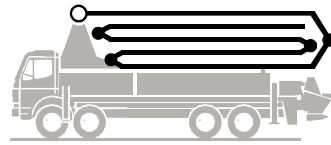


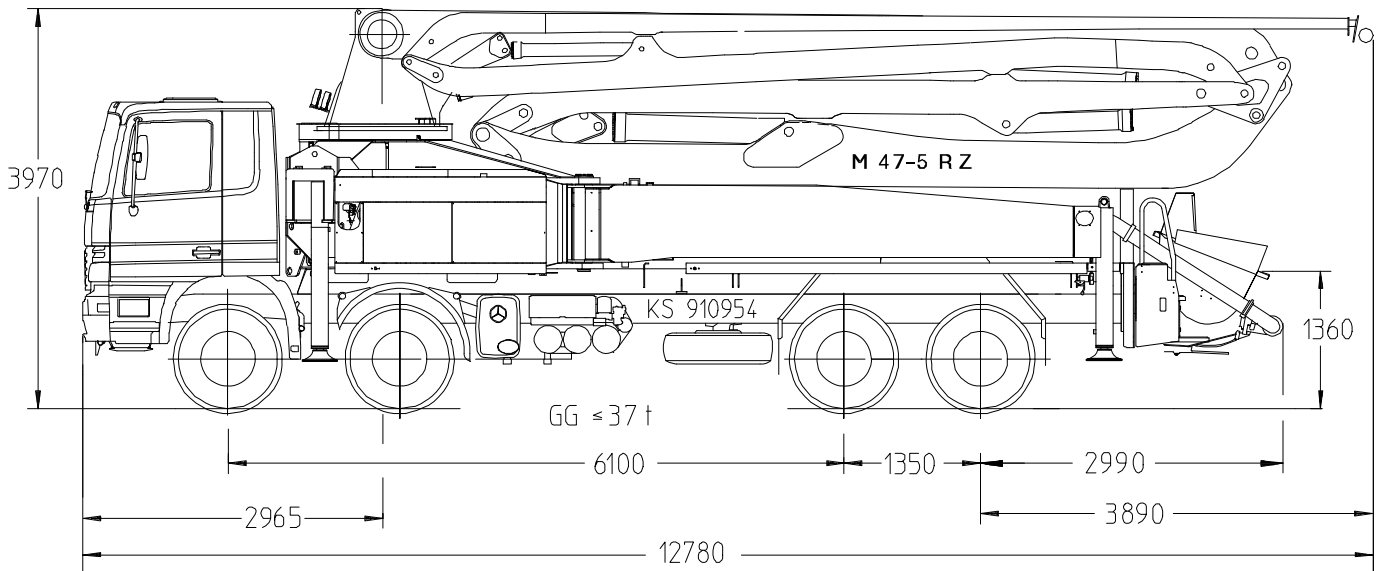
Putzmeister

Truck-mounted concrete pump BSF 47-5.14 H

Output up to 160 m³/h
 Delivery pressure up to 130 bar*



.16 H
.16 H LS



Note: Standard version. Dimensions and weights depend on truck, pump model and equipment.
 Dimensions in mm, MB-Actros 4144 as example.

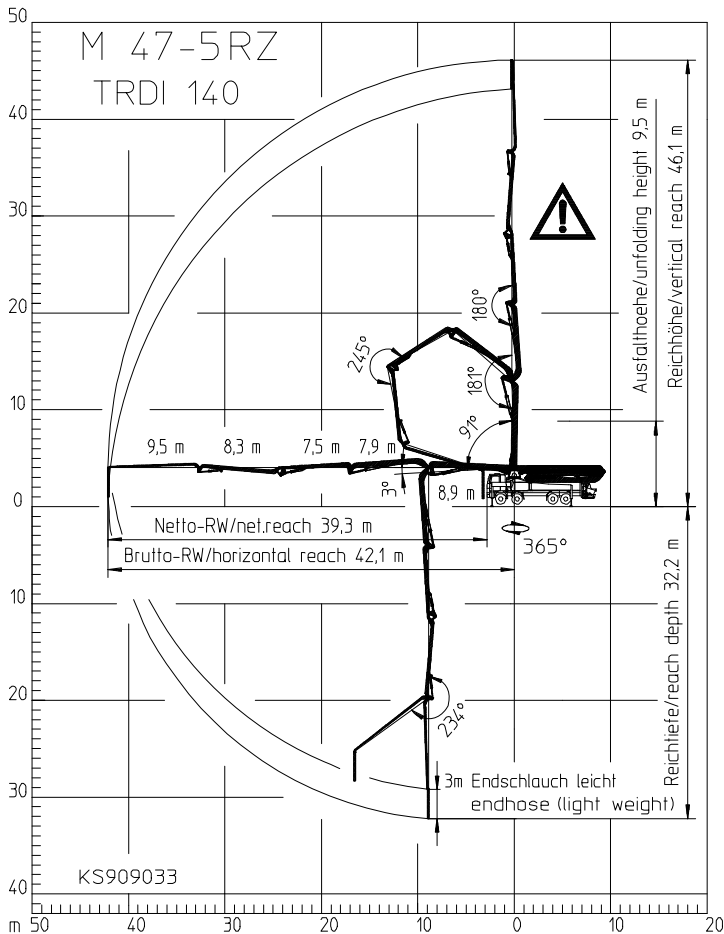
Technical data

Boom M 47-5			
Sections			5
Reach height	m		46.1
Horizontal reach	gross	m	42.1
	net	m	39.3
Reach depth max.	m		32.2
Unfolding height	m		9.5
End hose length	m		3
Folding system			RZ
Delivery line			DN 125

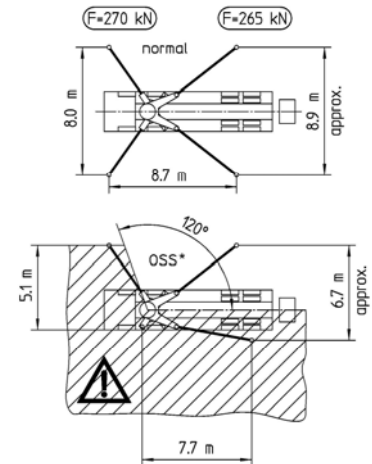
Pump		BSF	.14 H	.16 H	.16H LS
Rod side	Output	m ³ /h	140	160	-
	Delivery pressure	bar	70	85	-
	Strokes	1/min.	27	31	-
Piston side	Output	m ³ /h	88	108	160
	Delivery pressure	bar	112	130	85
	Strokes	1/min.	17	21	26
	Delivery cylinder	Ø mm	230	230	250
	Stroke	mm	2100	2100	2100

*) Delivery line boom max. 85 bar.
 All data maximum theoretical.

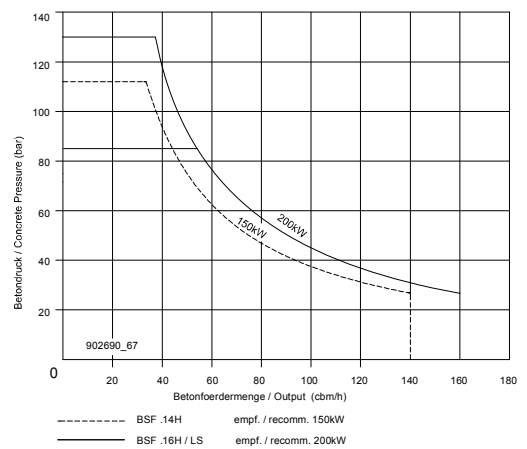
Reach information diagram, Support, Performance diagram



Range in which you must not work with the end hose.



* OSS not included in series range
OSS ist nicht im Serienumfang enthalten



All data max. theor.

Serial delivery scope

Agitator and water pump radio remote / on site controlled
Boom pedestal TRDI
Boom rear light 24 V
Cardan shaft maintenance free
Central lubrication strip hopper
Chassis horn via remote control on hopper
Concrete hopper RS 900 with agitator
Connections for hydraulic emergency supply
C pipe connection for filling water tank
Delivery cylinder chrome plated
Delivery line (1-layer) PM 40, arm assembly
Delivery piston, 'compact' (14 H, 16 H), 'single' (16 H LS)
Diagnose interface
End hose 3,0 m DN 125 5,5"
Ergonic Graphic Display (EGD) with machine fault management

Ergonic Pump System (EPS) incl. Ergonic Output Control (EOC)
Flushing water pump 160 l/min 25 bar
Hand working search light for hopper, detachable
Hydraulic hose for replacement in hose pack
Operating manuals 2 x cert. (1 x paper, 1 x CD-ROM) spare part list
Painting: pump MB 1227 chrome yellow
Painting: arm assembly RAL 3020 signalred
Platform non-skid
Pump on/off dependent on speed
Radio remote control proportional with display
Remote control with 40m cable, without display
Rubber collar on hopper
Single piston
Spectacle wear plate DURO 22
Splash guard fixed

Spray hose 10 m incl. bracket
S-transfer tube switchover fast/slow
Support plates (4 x) in magazine (2 x) open
Swivel support plates
Tool set incl. standard equipment
Towing eye
Water supply, hopper (1/2")
Water tank 880 l

See quotation for exact serial delivery scope.
Comprehensive range of options available on request.

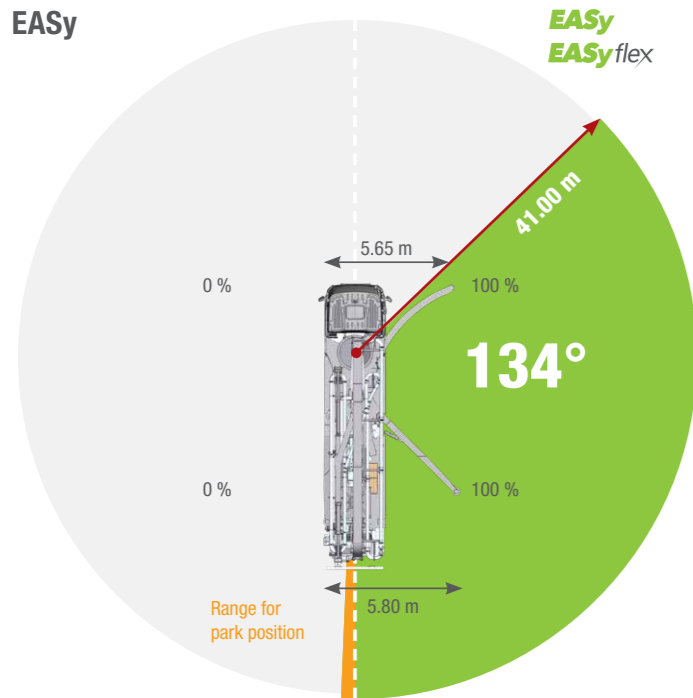
EASy and EASyflex

The outrigger systems EASy and EASyflex extend the range of applications of the S 47 SX III. With EASy, the concrete pump can be safely supported on one side, if required, whilst covering a working range of 134°. EASyflex provides further outrigger combinations and as such, more flexibility on the jobsite. In this way, pump applications can be achieved with maximum working safety even in difficult, restricted spaces. More flexibility for more safety.

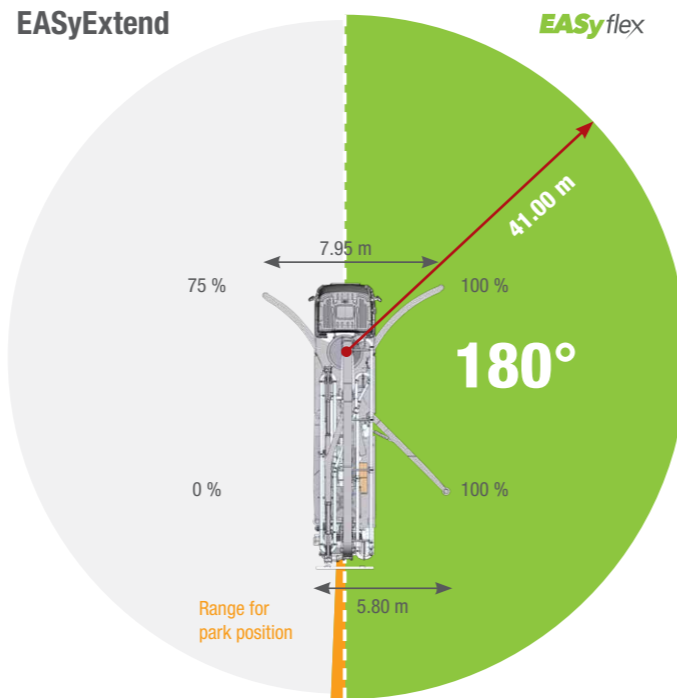
S 47 SX III Truck-mounted concrete pump

Working range

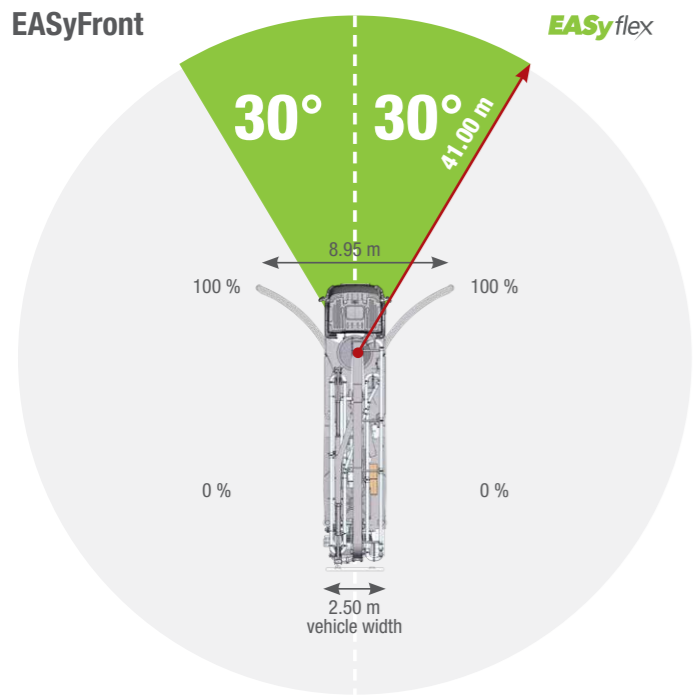
EASy



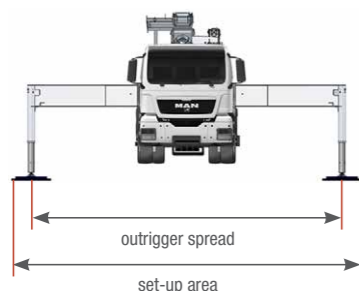
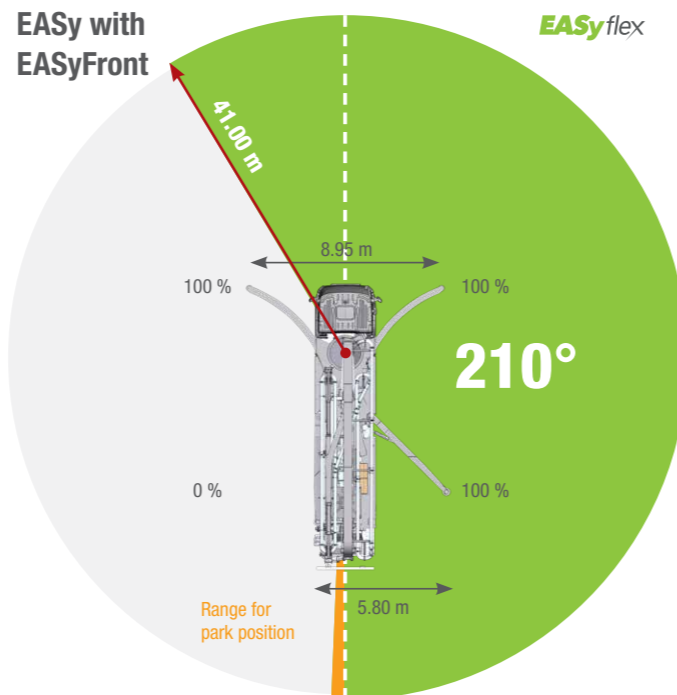
EASyExtend



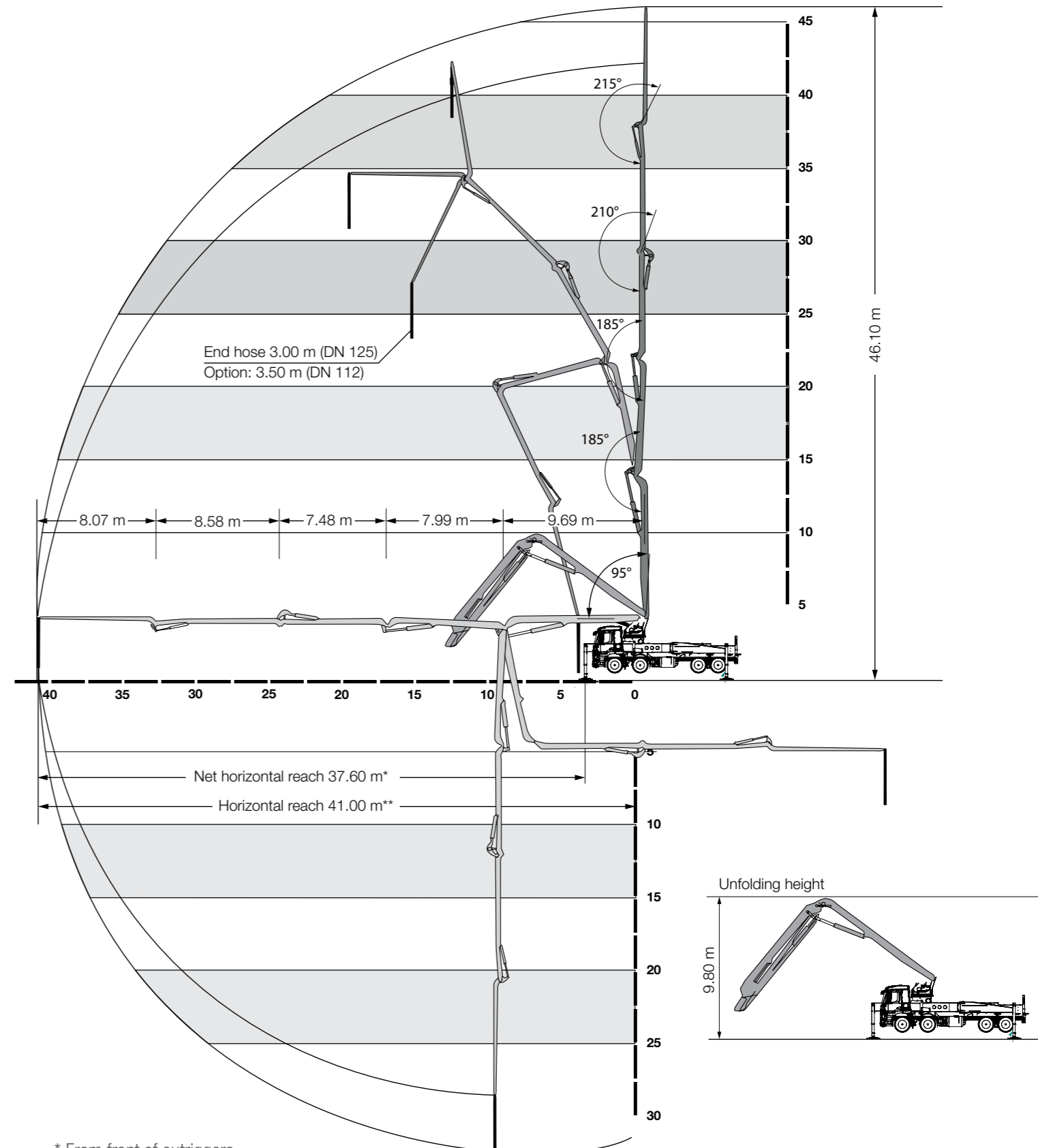
EASyFront



EASy with EASyFront



The outrigger spreads as specified are measured from the centre of the outrigger leg. Any cribbing or underlay timbers must be taken into account when determining the required set-up area.



* From front of outriggers
** From centre of turret

S 47 SX III Truck-mounted concrete pump

Technical data

Performance

Pump kit		P2023-110/75	P2525-120/85
Drive	l/min	636	636
Delivery cylinders	mm	230 x 2,000	250 x 2,500
Concrete output max.	m ³ /h	161	162
Pressure on concrete max.	bar	85	85
Stroke rate max.	1/min.	32	22
Concrete valve		B-ROCK	B-ROCK

Hydraulic system

Design		open system
Hydraulic tank	l	480

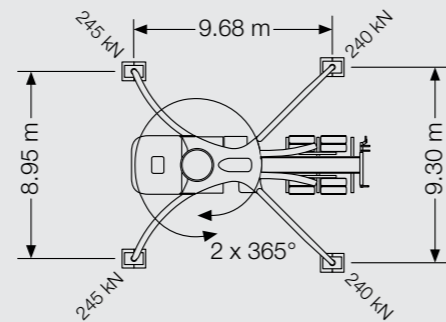
Boom

47 R

Delivery line		DN 125
Length of end hose	m	3.00 with end hose DN 125 / 3.50 (1.00 + 2.50) with end hose DN 112
Vertical reach	m	46.10
Reach depth	m	32.40
Horizontal reach	m	41.00 (from centre of turret)
Net horizontal reach	m	37.60 (from front of outriggers)
Number of boom sections		5
Height of the inflexion points	m	4.30 / 14.00 / 22.00 / 29.50 / 38.00
Slewing range		2 x 365°
Folding height	m	9.80

Support

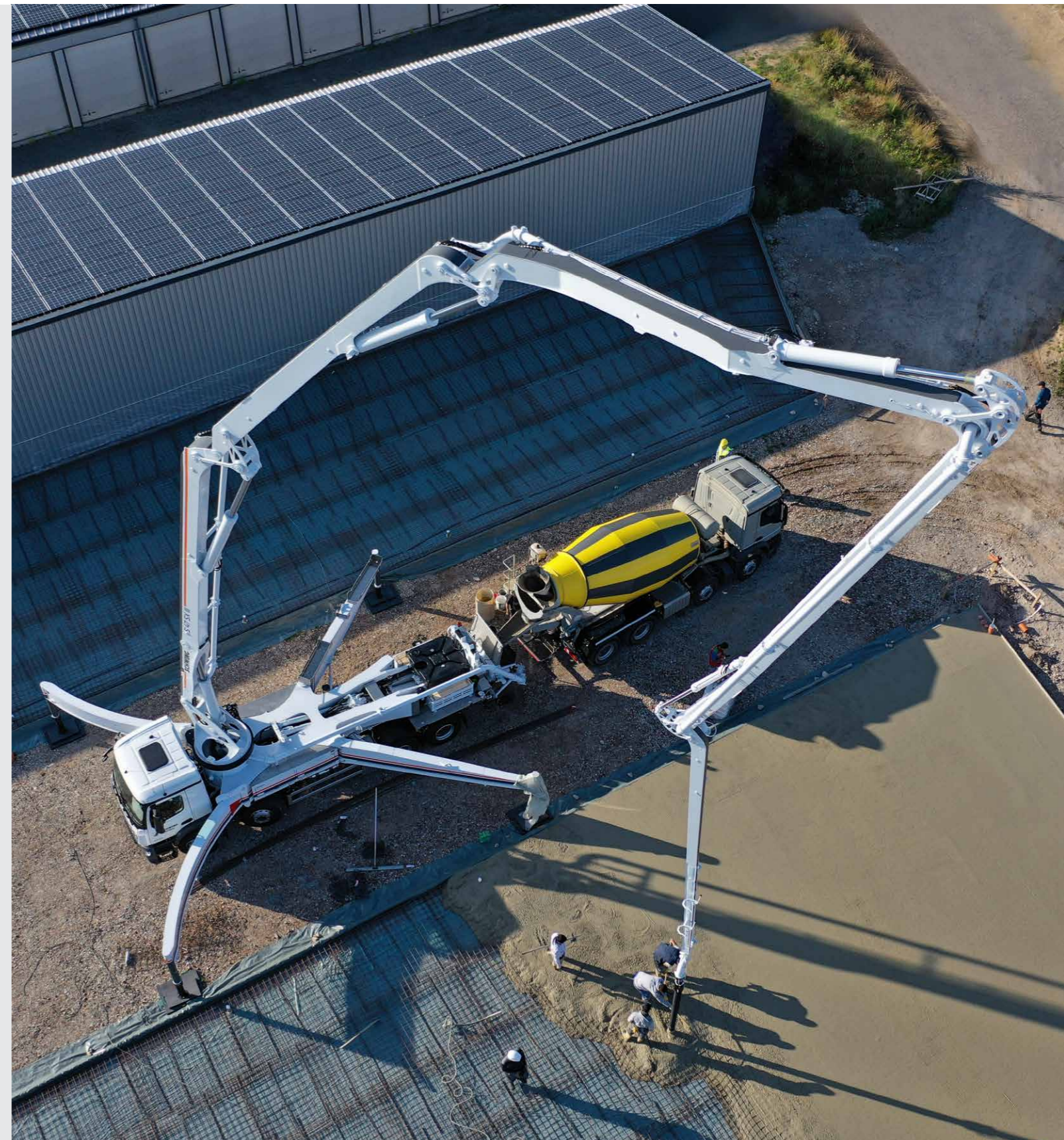
Outrigger width, front	m	8.95
Outrigger width, rear	m	9.30
Outrigger load, front	kN	245
Outrigger load, rear	kN	240



Chassis (examples*)		Mercedes-Benz Arocs 3546	MAN TGS 35.420
Axles configuration		8x4	8x4
Wheelbase	mm	5,750	5,750
Length	mm	11,880 / 11,850	11,840 / 11,810 (with / without underride guard)

Miscellaneous

Water tank	l	610
------------	---	-----



*Can be mounted on different chassis frames